

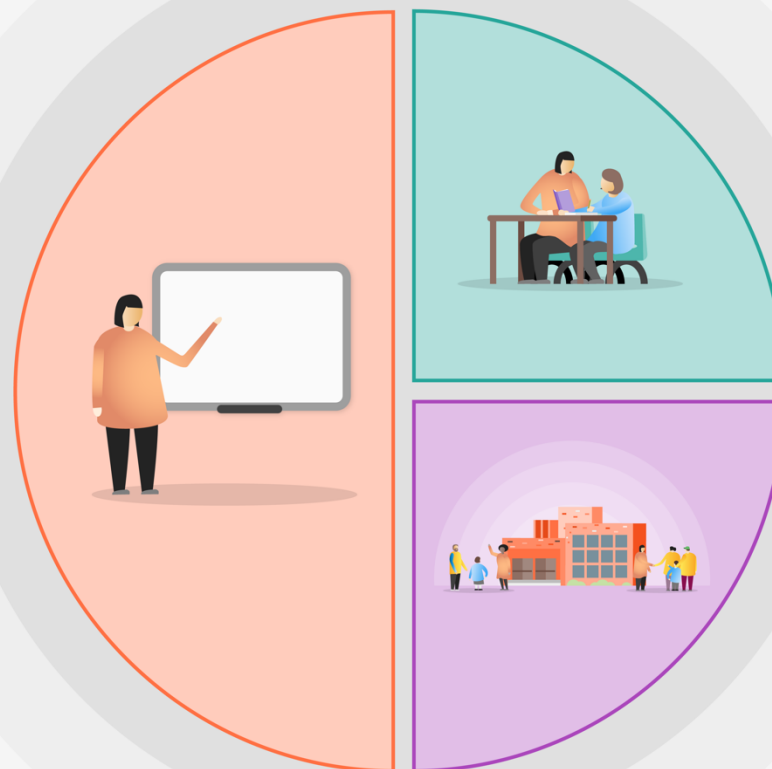


Total allocation of funding = £77,600

Impact will be assessed via internal/external examinations (Impact tracker available per request)

## 1 Teaching

- Evidenced informed *quality first teaching* supported by our professional development in the Science of Learning (SIP 4)
- *Closing the gap* – implementing our “fold it in” strategy that identifies crucial knowledge from the lockdown curriculum and interleaving it back into teacher planning (SIP 2)
- Maintaining a broad, balanced and challenging *curriculum* across all Key Stages. (SIP 2)
- Implementation of a *remote learning* policy that includes lesson streaming live via Microsoft Teams to support pupils in self-isolation or during a lockdown scenario. (SIP 5)
- Using a range for *formative assessment* strategies such as low stakes testing to identify and fill gaps. (SIP 2)



## 2 Targeted academic support

- Small group tutoring in all subjects for Year 11 pupils, in particularly disadvantaged (SIP 3)
- Small group intervention support opened to all pupils (SIP3)
- Academic support package for our most vulnerable pupils – SEND, LAC, SG (SIP 3)

## 3 Wider strategies

- Improving *pupil mental health* the implementation of Place2Be (SIP 1)
- Positive use of *praise and rewards* acknowledging outstanding attitude to learning (SIP 1)
- Delivery an effective PSHCE curriculum that support pupils' health and wellbeing (SIP 1)